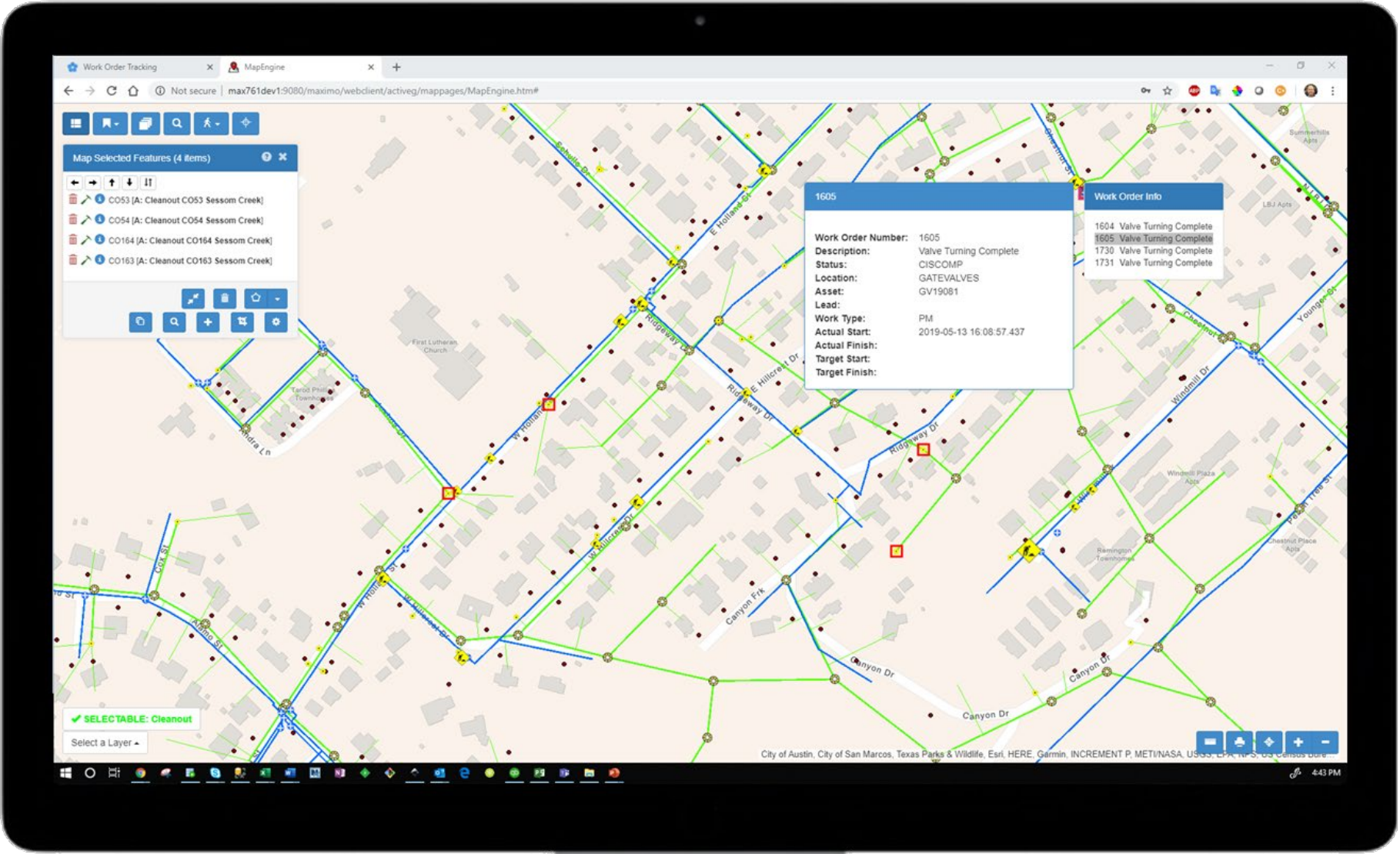




activeG

superior spatial solutions



1605

Work Order Number: 1605
Description: Valve Turning Complete
Status: CISCOMP
Location: GATEVALVES
Asset: GV19081
Lead:
Work Type: PM
Actual Start: 2019-05-13 16:08:57.437
Actual Finish:
Target Start:
Target Finish:

Work Order Info

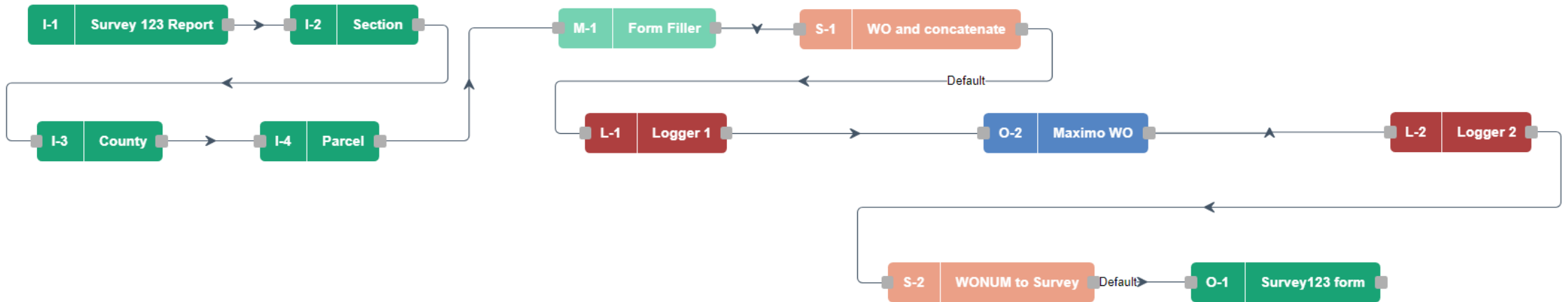
1604 Valve Turning Complete
1605 Valve Turning Complete
1730 Valve Turning Complete
1731 Valve Turning Complete

Map Selected Features (4 items)

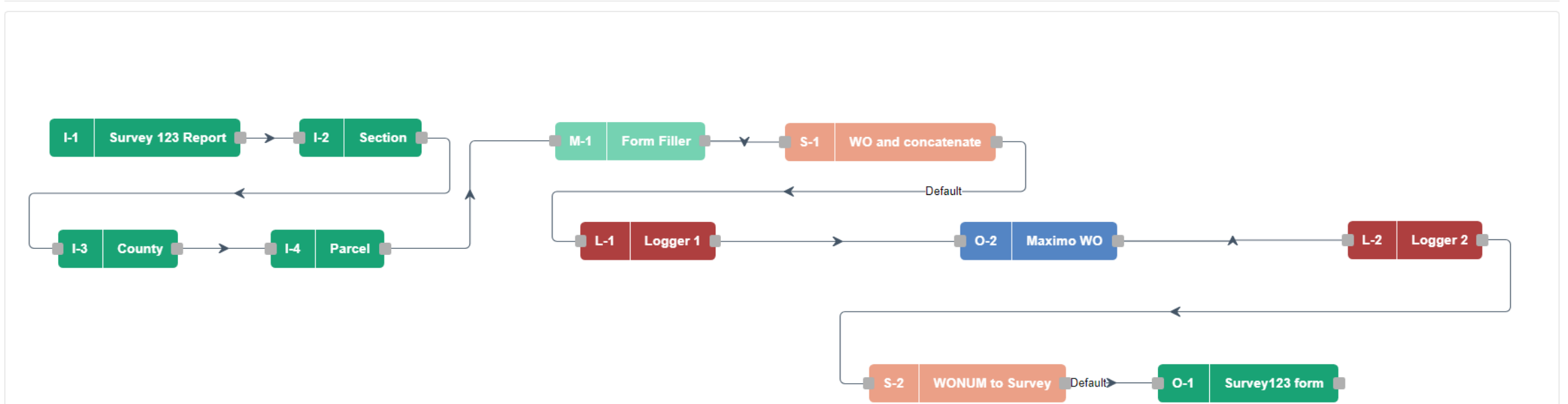
- CO53 [A: Cleanout CO53 Sessom Creek]
- CO54 [A: Cleanout CO54 Sessom Creek]
- CO164 [A: Cleanout CO164 Sessom Creek]
- CO163 [A: Cleanout CO163 Sessom Creek]

SELECTABLE: Cleanout
Select a Layer

City of Austin, City of San Marcos, Texas Parks & Wildlife, Esri, HERE, Garmin, INCREMENT P, METI/NASA, USGS, CPA, © 2019



What is ActiveG Nash Workflows?



What is ActiveG Nash Workflows?

- Powerful, no-code process automation web application for **ArcGIS**.
- REST API integration with **IBM Maximo**, **ServiceNow**, and more.
- Native geo inputs to enrich your asset data.
- Enables Esri field apps with robust business logic.

